

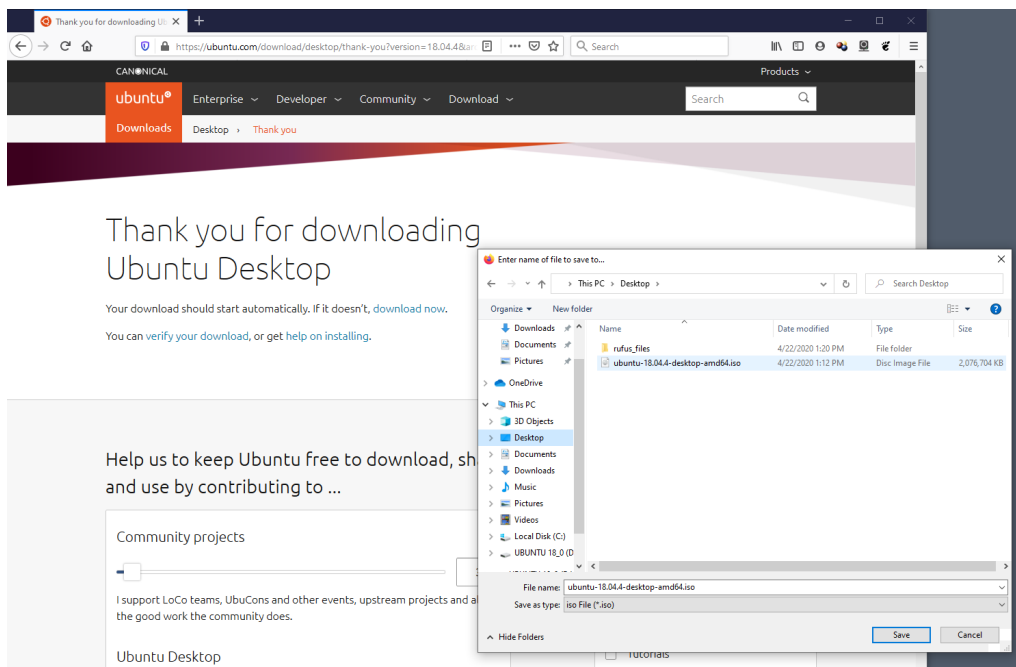
## Download Ubuntu installation image

Ubuntu Linux uses the Gnome Desktop Environment with it's standard installation. However some users prefer Xubuntu which uses the Xfce Desktop Environment and is closer to a Windows look-and-feel.

**[It does not matter which Desktop Environment is installed as long as it is Ubuntu version 20.04](#)**

The Ubuntu installation files are found at <https://www.ubuntu.com/> in the Downloads section

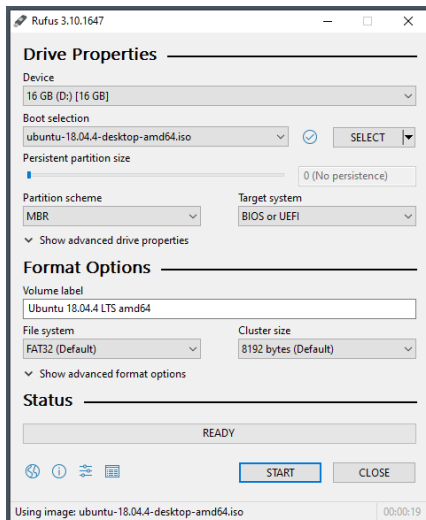
Download the Ubuntu installation .iso file to your Windows Desktop



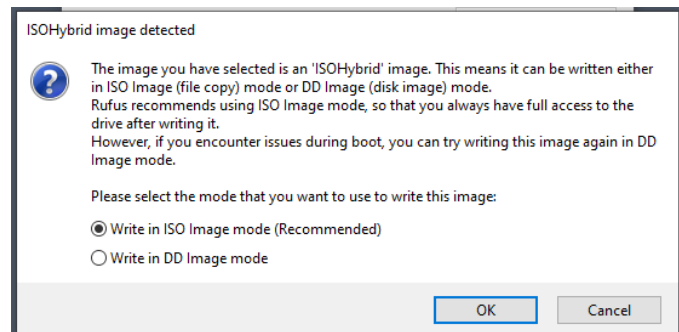
## Create a bootable Ubuntu USB installation drive

The next step is to write the Ubuntu .iso file that was downloaded to a USB drive and make the USB drive bootable. This is easily accomplished using the Rufus application for Windows.

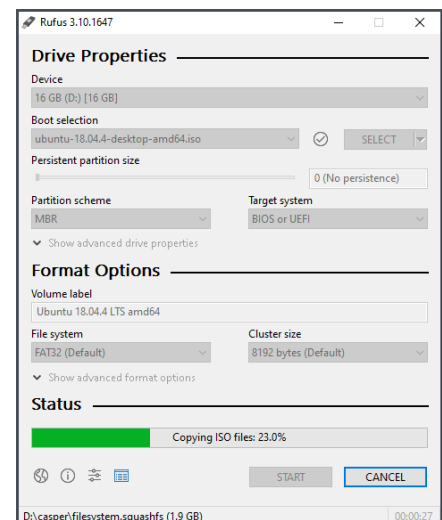
1. Download Rufus from <https://rufus.ie/> Rufus does not require any installation so just save the rufus.exe file on the Windows Desktop
2. Insert a formatted USB drive then open the Rufus application on the Desktop
3. Click the “SELECT” button and choose the Ubuntu .iso installation image file



4. If prompted just press OK to continue with the default choice



5. Wait for Rufus to finished creating a bootable USB drive for the Ubuntu installation
6. When Rufus is finished remove the USB drive from the Windows computer and insert it into the target computer



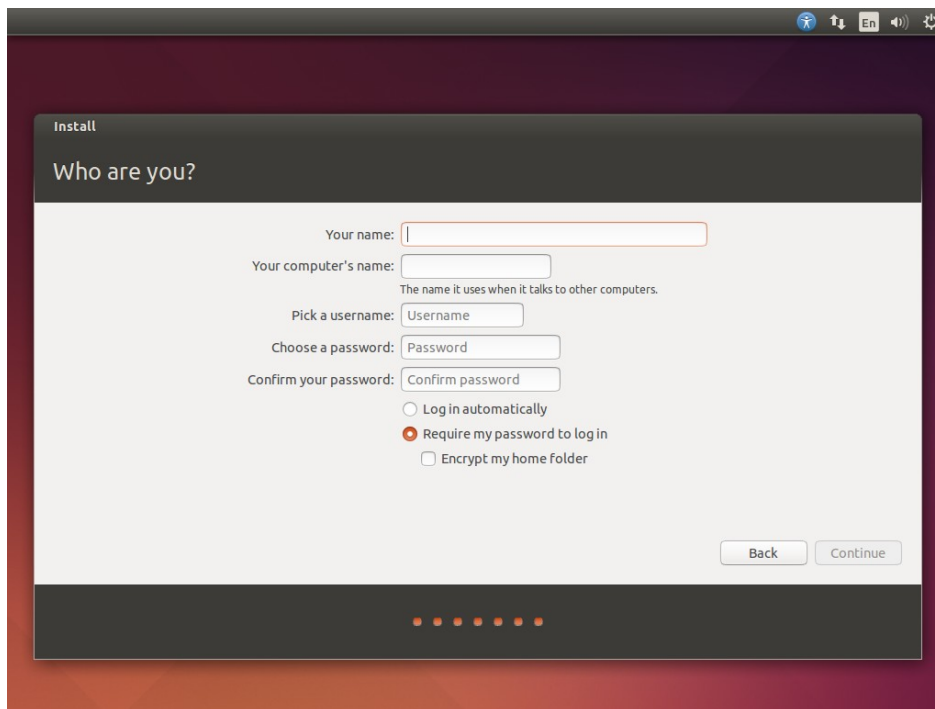
## Install Ubuntu

Boot the computer from the USB drive then follow all of the on-screen instructions to install Ubuntu.

### **IMPORTANT:**

**When asked for the user name and password for the default account make sure that the login name is “polaris” and that the password is also “polaris”**

It is also recommended to select “Log in automatically” for convenience



Reboot the computer when the installation is completed.

## Install the Polaris Logging System software

The Polaris Logging System requires a variety of Linux libraries and applications to be downloaded and installed. After installing the Linux applications the installation program will install the Polaris applications as the final step. Expect this process to take longer on slow Internet connections.

1. After booting the Ubuntu laptop login as “polaris”
2. [Download the installation script and instructions \(this file\) from the Polaris update site](#) and save the .ZIP file in your “**Home**” directory. Right-click the downloaded .zip file and select “**Extract Here**”
3. After extracting you should find a file named “**install\_polaris.sh**” which is a Linux shell script used to install the Polaris applications. Shell scripts, also known as “.BAT” batch files in Windows, are command instructions that are executed in order to install the applications. We will first need to instruct Linux that the script is to be executed then we will execute the script.
4. Open a Terminal (aka: command prompt) by holding the the **CTRL** and **ALT** keys down then pressing the “**T**” key. Alternately, use the Ubuntu menu to find the “**Terminal**” application
5. Change to the extracted files directory with the command: **cd install\_polaris**
6. Instruct Linux to allow the file “**install\_polaris.sh**” to be executed as a program using the following command: **chmod +x install\_polaris.sh**
7. Run the installation program by entering the command: **./install\_polaris.sh**
8. After the installation is complete reboot then use the “**Polaris Logging System**” icon on the Desktop to launch the WEB browser used with the Polaris applications

Note: Any WEB browser will work, not just Firefox. To use a different WEB browser simply use the Internet address “**localhost**” to open the Polaris applications.